

IEMIGGO®

2018

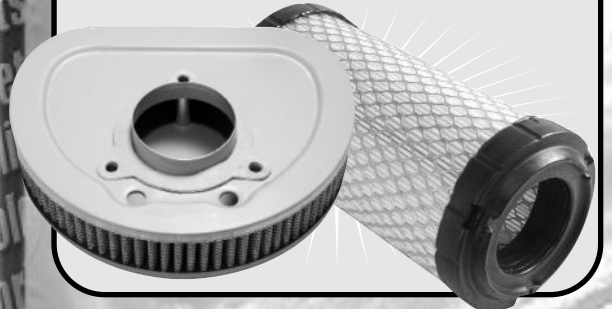
**NEW
PARTS
REVIEW**

**THIS PARTS REVIEW
IS A COMPILATION
OF ALL THE NEW
PARTS WE HAVE
ADDED TO OUR LINE,
FEATURED IN OUR
PASSPORT
PUBLICATIONS,
FROM 2018**

MIRRORS



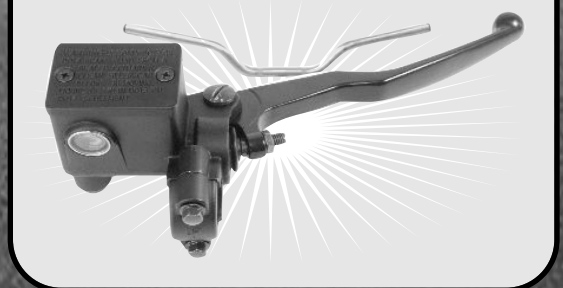
AIR FILTERS



**HANDLEBARS/
CONTROL LEVERS**



NEW MASTER CYLINDERS



**NEW DOT APPROVED
LIGHTING**



AND MORE!

REPLACEMENT MIRRORS FOR YAMAHA

20-57951/52



20-57951 R/H
OE: 5EL-26290-10

20-57952 L/H
OE: 5EL-26280-10

FITS: YBR 125 CUSTOM,
XVS900A DRAG
STAR CLASSIC '09-UP
XVS 1100A DRAG STAR
CLASSIC '06-UP
XVS1300A MIDNIGHT STAR '07-UP
BT BULLDOG 1100 '02-'06



20-57941/42

20-57941 R/H
OE: 2D1-26290-00

20-57942 L/H
OE: 2D1-26280-00
FITS: FZ1 '06-'07

NEW AIR FILTERS



12-91142 AIR FILTER FOR HONDA

APPLICATIONS

REPLACES OEM: 17210-MFL-000

CBR1000RR 2008 - 2016,

CBR1000RA 2010 - 2016,

CBR1000SP2014 - 2016

REPLACEMENT AIR FILTER FOR KAWASAKI UTV MULE

12-93032

REPLACES KAWASAKI OE: 11013-1290

FITS:

MULE PRO-FXT 15-18,

MULE 2510 DIESEL 00,

MULE 3010 DIESEL 03-07,

MULE 3010 DIESEL 4X4 04-08,

MULE 3010 TRANS 4X4 DIESEL

07-13,

MULE PRO-DX 16-18,

MULE PRO DXT 16-18

MULE 3000 01-08,

MULE 3010 4X4 01-08,

MULE 3010 TRANS 4X4 05-08,

MULE 4000 09-12, 14-18,

MULE 4000 TRANS 18,

MULE 4010 4X4 09-12, 14-18,

4000 TRANS 4X4 09-18,

MULE PRO FX 16-18,

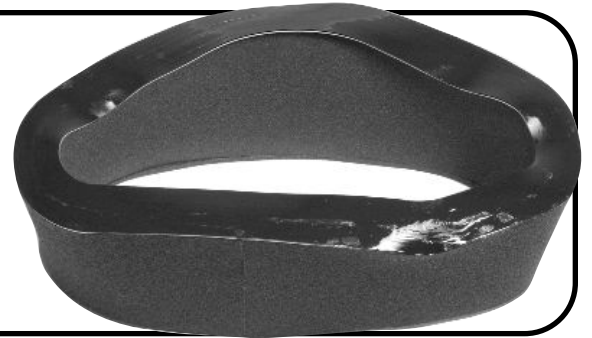


12-92932 AIR FILTER FOR KAWASAKI

REPLACES OEM:11013-1189
 FITS: ZX-6D, ZZR600D 90-93

**12-93028 AIR FILTER FOR KAWASAKI**

REPLACES OEM:11013-0001
 KVF650 PRAIRIE, BRUTE FORCE 2003 - 2008
 KFX700A V FORCE (KSV700) 2004 - 2009
 KVV700 PRAIRIE 4X4,
 TEAM GREEN 2004-2006
 KVF750 A-L BRUTE FORCE 4X4I 2005-2018

**12-94096 AIR FILTER FOR SUZUKI**

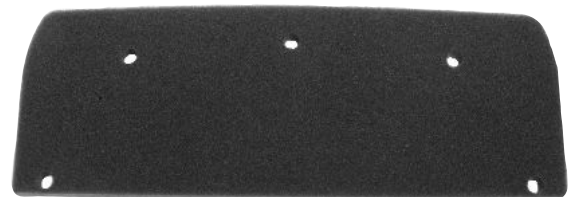
REPLACES OEM:13780-47H00 / 10
 FITS: GSX-R1000 2009 - 2016
 GSX-S1000 2015 - 2017

**12-94217 AIR FILTER FOR TRIUMPH**

REPLACES OEM: T2200557
 FITS: 800 TIGER 2011 - 2016
 800 TIGER XC / XCA / XCX 2011 - 2017
 800 TIGER XR / XRT / XRX 2015 - 2017

**12-94156 AIR FILTER FOR MV AGUSTA**

APPLICATIONS
 REPLACES OEM: 8000A9050
 BRUTALE B4 910S 2005 - 2007
 BRUTALE B4 920 2011 - 2012
 BRUTALE 989R 2008 - 2009
 BRUTALE 990R 2010 - 2011
 BRUTALE 1078R 2010 - 2013
 BRUTALE 1090RR - 2009



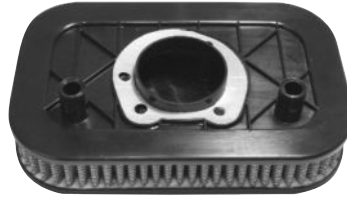
REPLACEMENT AIR FILTERS FOR HARLEY DAVIDSON®



12-81570



12-81580



12-81581



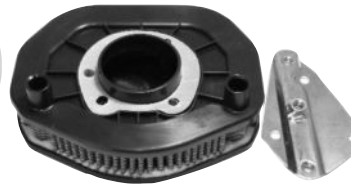
12-81583



12-81584



12-81585



12-81586



12-81587

EMGO#	MODEL	YEARS	OEM #
12-81570	XL883R XLH 1200 XLH 883 XL1200C XL 883C XLH 883 XL1200S	2002-2003 1988-2003 1988-2003 1996-2003 1999-2003 1988-2003 1996-2003	29036-88, 29330-96
12-81580	CARBURETED TWIN CAM MODELS SOFTAIL EFI MODELS EXCEPT: 2012 - LATER FLS 2008-2011 FLSTSB 2011 AND LATER FXS 2002-2007 EFI DYNA & TOURING MODELS	1999-2006 2001-2015	29461-99
12-81581	XL MODELS WITH OVAL AIR CLEANER ASSY	2004-2013	29331-04
12-81583	TOURING AND TRIKE MODELS	2008-2013	29633-08
12-81584	DYNA MODELS WITH TEARDROP AIR CLEANER	2008-2015	29191-08
12-81585	FXDB FLS FLSTSB FXS	2013 - LATER 2012-2015 2008-2011 2011-2013	29314-08
12-81586	XL MODELS WITH ROUND AIR FILTER COVER	2014 - LATER	29400015
12-81587	TOURING MODELS AND TRIKES SOFTAIL MODELS EXCEPT FLSTFBS	2014-2016 2016-2017	29400045

1" MONKEY BARS

MONKEY BARS						
EMGO#	WIDTH	RISE	CENTER	PULL BACK	FINISH	DIMPLES
07-92409	28.5"	6.5"	5.75"	5.5"	Chrome	Yes
07-92409B					Black	Yes
07-92409S					Satin black	Yes
07-92408					Chrome	No
07-92408B					Black	No
07-92408S					Satin black	No
07-92411	28.5"	8.5"	5.75"	5.5"	Chrome	Yes
07-92411B					Black	Yes
07-92411S					Satin black	Yes
07-92410					Chrome	No
07-92410B					Black	No
07-62410S					Satin black	No
07-92413	28.5"	10.5"	5.75"	5.5"	Chrome	Yes
07-92413B					Black	Yes
07-92413S					Satin black	Yes
07-92412					Chrome	No
07-92412B					Black	No
07-92412S					Satin black	No

MANUFACTURED FROM 1" CARBON STEEL WITH 2.3MM WALL THICKNESS. AVAILABLE IN CHROME PLATED OR BLACK POWDERCOAT WITH OR WITHOUT DIMPLES. DIMPLED BAR FITS 1982 & UP OEM HARLEY DAVIDSON® CONTROLS (NOT FLY BY WIRE).



SUPER NARROW 7/8" DRAG BAR



23-93118

22" WIDE 2" PULLBACK 5.25" CENTER
BEAUTIFUL CHROME FINISH

NEW REPLACEMENT HANDLEBAR FOR HONDA

23-93153
OEM REPLACEMENT HANDLEBAR FOR
JAPANESE MARKET
1999-2004 HONDA CB 400SF
REPLACES OE: 53100-MCE-000
WIDTH 27.5" RISE 2", PULLBACK 3.5"
CENTER 4.5"



OUR 36" AND 39" 1" BEACH BARS NOW COME WITH DIMPLES

BEACH BARS 36" WITH DIMPLES
07-12594 CHROME
07-12594S SATIN BLACK

BEACH BARS 39" WITH DIMPLES
07-12595 CHROME
07-12595S SATIN BLACK



NEW

NEW CLUTCH BRACKET, NEW CLUTCH AND BRAKE LEVERS

NEW

NEW CLUTCH BRACKET							
EMGO#	MAKE	MODEL	YEAR	REPLACES O.E.M #	DESCRIPTION	FINISH	NOTES
34-37206	HONDA	CRF450RX	17-19	53172-MKE-A10	CLUTCH BRACKET		
NEW LEVERS							
EMGO#	MAKE	MODEL	YEAR	REPLACES O.E.M #	DESCRIPTION	FINISH	NOTES
BMW							
30-69675	BMW	S1000XR	14-18	32728561584	BRAKE LEVER	BLK	
30-69674	BMW	S1000XR	14-18	32728553801	CLUTCH LEVER	BLK	
HONDA							
30-76204	HONDA	CBR250RR	16-18	53178-K64-N00	CLUTCH LEVER	BLK	NON US
30-76203	HONDA	CBR250RR	16-18	53175-K64-N01	BRAKE LEVER	BLK	NON US
30-46902	HONDA	INTEGRA 750	14-17	53180-MJL-D71	CLUTCH LEVER	POL	
		X-ADV 750	2017				
KAWASAKI							
30-33492	KAWASAKI	KX450F	2019	13236-0813	CLUTCH LEVER	POL	
30-33491	KAWASAKI	KX450F	2019	13236-0807	BRAKE LEVER	POL	
DUCATI							
30-69401	DUCATI	BEVEL 750/900	ALL	079754348	BRAKE LEVER	BLK	
MOTO GUZZI							
30-69404	MOTO-GUZZI	SP1000	79-94	14605750	CLUTCH LEVER	POL	FINGER TIP
		V35/350	77-01				STYLE
		V50/500	80-01				TOMMESELLI
		V65/650	82-95				
		LEMANS 850	81-94				
		850 T3	79-85				
30-69403	MOTO-GUZZI	SP1000	79-84	14605650	BRAKE LEVER	POL	FINGER TIP
		V35/350	77-01				STYLE
		V50/500	80-01	FOR USE ON BREMBO			TOMMESELLI
		V65/650	82-95	ROUND RESERVOIR			
		LEMANS 850	81-94	MASTER CYLINDER			
		850 T3	79-85				
KTM							
30-69702	KTM	DUKE 390	14-17	90502042000	CLUTCH LEVER	BLK	NON
		RC 390	15-16				ADJUSTABLE
		DUKE 200	14-17				
30-69702A	KTM	DUKE 390	2018	93802042000	CLUTCH LEVER	BLK	ADJUSTABLE
		RC 390	2018				
30-69701	KTM	DUKE 390	2018	93713002033	BRAKE LEVER	BLK	ADJUSTABLE
		RC 390	2018				

REPLICA MAGURA FLEX LEVERS FOR KTM, HUSQVARNA

30-69534F



30-69533F



REPLICA MAGURA FLEX LEVER					EMGO #	MAKE	MODEL	YEARS	
EMGO #	MAKE	MODEL	YEARS		30-69534F	KTM	125 EXC	08 - 16	CLUTCH LEVER
30-69533F	HUSQVARNA	TC125	2018	BRAKE LEVER			200 XC-W	09 - 16	50302031300
		TX125	2018	24013002000			300 XC-W	2014	
		TE150	2018				450 SX-F	09 - 12	
		FC250	2018				505 XC-F	2009	
		FE250	2018			HUSQVARNA	TC125	14 - 17	
		TC250	2018				TX125	2017	
		TE250/I	2018				TE150	2017	
		TE300/I	2018				FC250	16 - 17	
		TX300	2018				FE250	2017	
		FC350	2018				TC250	2017	
		FE350	2018				TE250	2017	
		TX350	2018				TE300	2017	
		FE450	2018				TX300	2017	
		FE501	2018				FC350	16 - 17	
30-69534F	KTM	125 EXC	08 - 16	CLUTCH LEVER			FE350	2017	
		125 SX	14 - 15	50302031300			FX350	2017	
		150 SX	09 - 15				FC450	16 - 17	
		150 XC	2014				FE450	2017	
		200 EXC	09 - 16				FX450	2017	
							FE501	2017	

NEW FORGED ALUMINUM SHIFTERS



83-87900



83-87910



83-87920



83-87965

EMGO #	MAKE	MODEL	YEARS	OEM #
83-87900	HONDA	CRF125F	2014 - 2018	24701-K28-305
83-87910	HONDA	CRF1000	2016 - 2017	24705-MJP-305
83-87920	KAWASAKI	KLX140	2008 - 2018	13242-0134
83-87965	YAMAHA	TTR125LE	2005 - 2018	1B2-E8110-00-00

HONDA REPLACEMENT FRONT BRAKE MASTER CYLINDER

PISTON DIAMETER 13MM

34-37288

REPLACES HONDA:

45510-KGA-941 NON US

45510-K33-305 US

FITS: CBR 125, CBR 150

XR125L, NXR 125,

CTX200 BUSHLANDER,

CBX250 TWISTER, XR250 TORNADO,

CB300F 15-2018 CBR 300R 15-19

XR650L

MZ REPLACEMENT FRONT BRAKE MASTER CYLINDERS

34-37290

REPLACES MZ OE 30.24.184

FITS MZ 251, 301

PISTON DIAMETER 11MM

YAMAHA REPLACEMENT FRONT BRAKE MASTER CYLINDERS

34-37287

FITS YAMAHA XS 650

1977-1984

PISTON DIAMETER 13MM

YAMAHA REPLACEMENT FRONT BRAKE MASTER CYLINDER

34-37289 NO PHOTO

PISTON DIAMETER 16MM

UNIVERSAL FRONT BRAKE MASTER CYLINDER

32-37281

14 MM FRONT BRAKE MASTER

CYLINDER WITH INTEGRAL

BRAKE LIGHT SWITCH,

10MM MIRROR MOUNT

AND FLUID LEVER

SIGHT GLASS

HONDA REPLACEMENT FRONT BRAKE MASTER CYLINDERS

34-37283
 REPLACES HONDA:
 45500-410-000



PISTON DIAMETER 15.8MM

34-37284
 REPLACES HONDA:
 45500-442-614



PISTON DIAMETER 14MM

MASTER CYLINDERS WITH NO PHOTOS

34-37286
 PISTON DIAMETER 14MM
 REPLACES HONDA: 45500-300-000

34-37285
 PISTON DIAMETER 15.8MM
 REPLACES HONDA: 45500-463-601

EMGO #	MAKE	MODEL	YEAR	OEM #	PISTON DIA.
34-37286	HONDA			45500-300-000	14MM
		CB350F	1972 - 1974		
		CB360	1974		
		CB360G	1974		
		CB360T	1975 - 1976		
		CB400F	1975 - 1977		
		CB450	1970 - 1974		
		CB500K	1971 - 1973		
		CB500T	1975 - 1976		
		CB550F	1975 - 1976		
		CB550K	1974 - 1976		
		CB750A	1976		
		CB750F	1975 - 1976		
		CB750K	1969 - 1976		
34-37283	HONDA			45500-410-000	15.8MM
		CX500	1978		
		CB750F2 (USA)	1977 - 1978		
		GL1000	1975 - 1978		
34-37284	HONDA			45500-442-614	14MM
		CB250N SUPER DREAM	1979 - 1981		
		CB250RSA, RSD	1980 - 1983		
		CBX250RSE			
		CB400T HAWK	1979 - 1981		
		CX500D	1980		
		FT500 ASCOT	1982 - 1983		
		XRB500			
34-37285	HONDA			45500-463-601	15.8MM
		CB350SG,SJ	1986, 1988		
		CB400NA,NB,NC SUPER DREAM	1979 - 1982		
		CB450DX			
		CB450SG,SJ	1986, 1988		
		NS400R			
		CX500A,B	1981		
		CX500 EUROSPORT			
		GL500DC SILVERWING			
		CBX550			
		CB650Z			
		CB650SC NIGHTHAWK			
		CX650ED EUROSPORT			
		GL650			
		CB750F	1979 - 1983		
		CBX750FE, FG	1984 - 1986		
		VF750SC			
		VF750FD			
		CB900F	1979 - 1983		
		CBX1000	1979 - 1982		
		GL1000K GOLDWING USA	1979		
		GL1100 GOLDWING			



MINI FAIRING WITH 5 3/4" HEADLIGHT OPENING

70-52503

MINI FAIRING IS AVAILABLE IN BLACK ONLY

**OVERALL HEIGHT 13.1/4", OVERALL WIDTH 10.3/4"
7.1/2" BETWEEN MOUNTING HOLES
DESIGNED FOR 5.3/4"
HEADLIGHT
MOUNTING HARDWARE NOT INCLUDED**

REPLACEMENT SHOCKS FOR HONDA

17-05602

ALL CHROME WITH UPPER SHROUD

17-05603

ALL CHROME NO SHROUD



**FITS: CB250G5 74-76, CL250/350 71-73, SL350K 69-72,
CB360T 74-76, CJ360T 75-76, CL360 74-76,
CB400F SUPER SPORT 75-77, CB500T 75-78,
CB550K 77-78, CB550F-77**

REPLACES HONDA OE: 52400-375-611, 52400-375-00052400-404-013

SHOCKS CASE QUANTITY 6, MINIMUM ORDER 60 PAIRS OF EACH PART NUMBER



84-68580

FLOAT HEIGHT GAUGE

**WE LIVE IN THE AGE OF FUEL INJECTION AND
HYBRID VEHICLES, BUT CLASSIC MOTORCYCLES
ARE COOL AND THEY HAVE CARBURETOR'S YOU
NEED A EMGO FLOAT HEIGHT GAUGE. 100% STEEL
CONSTRUCTION AND A BLACK OXIDE FINISH
ENSURES A LIFETIME OF RELIABLE SERVICE**

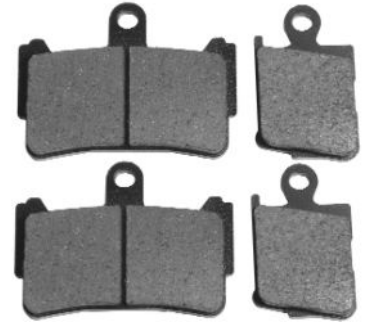
NEW BRAKE PADS

REPLACEMENT FRONT BRAKE PADS FOR HONDA

**91-68018 SINTERED, 64-68068 FULL METAL
REPLACES OEM: 06455-MGE-006**

FITS:

**HONDA VFR 1200F (MANUAL GEARBOX) 2010-2016
VFR1200FD (AUTOMATIC TRANSMISSION) 2010-2017**



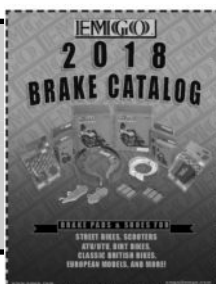
FULL METAL BRAKE PADS

HONDA	YEARS	METAL PAD	F/R
CR80R	01-02	64-51861	F
CR80RB	00-02	64-51861	F
CRM 80	89	64-51861	F
CR85R/B	03-07	64-51861	F
CRF150R	06-17	64-51861	F
CRF150RB	07-17	64-51861	F
CRF150II	06-09	64-51861	F
CRF150II	13-15	64-51861	F
ATC200X	83-87	64-51861	F
ATC250R	82-84	64-51861	F
TRX250EX, SPORTMAX 250 EX	01-08	64-51861	F
TRX250X FOURTRAX	87-88	64-51861	F
TRX250X FOURTRAX	91-92	64-51861	F
TRX250X FOURTRAX	09-17	64-51861	F
TRX300EX FOURTRAX	93-08	64-51861	F&R
TRX300X	09	64-51861	F&R
TRX400EX	99-08	64-51861	F&R
TRX400X	09-15	64-51861	F&R
KAWASAKI	YEARS	METAL PAD	F/R
KX80	88-00	64-51861	R
KX80 BIG WHEEL	88-94	64-51861	R
KX 80 MINI	88-97	64-51861	R
KX85	01-17	64-51861	R
KX85-II	05-17	64-51861	R
KX100	95-17	64-51861	R
KLX140/L	08-16	64-51861	R



64-51861

SUZUKI	YEARS	METAL PAD	F/R
RM125	88	64-51861	R
LT230 QUADSPORT 230	85	64-51861	R
LT250R QUADRACER 250	85-86	64-51861	R
RM250 CHAMPION	87-88	64-51861	R
TM	YEARS	METAL PAD	F/R
MX80	94-98	64-51861	R
YAMAHA	YEARS	METAL PAD	F/R
YZ80 COMPETITION	93-01	64-51861	R
YZ85	02-18	64-51861	R
YZ85LW	10-18	64-51861	R
YZ125 COMPETITION	89	64-51861	R
YZ250 COMPETITION	89	64-51861	R
YZ360	86	64-51861	R
YFM660FG	07-08	64-51861	F
YFM660FWA GRIZZLY	02-06	64-51861	F



AVAILABLE NOW
2018 BRAKE CATALOG

GO TO@

WWW.EMGO.COM



7" CHROME HEADLIGHT FOR YAMAHA



OUR 66-65024 YAMAHA OEM REPLICA HEADLIGHT NOW AVAILABLE IN BLACK SHELL AND CHROME RIM
 REPLACES OEM:
 584-84310-60-00
 FITS: XS650, XS750, XS850, XS1100 1974-1984

66-65024
 COMPLETE HEADLIGHT ASSEMBLY
 CHROME SHELL CHROME RIM

66-65024D
 COMPLETE HEADLIGHT ASSEMBLY
 CHROME SHELL CHROME RIM DOT COMPLIANT

66-65026
 CHROME SHELL AND CHROME RIM ONLY

66-65026B
 BLACK SHELL AND CHROME RIM ONLY

66-65026BD
 COMPLETE HEADLIGHT ASSEMBLY BLACK SHELL AND CHROME RIM ONLY DOT COMPLIANT

66-65026R
 CHROME RIM AND RETAINER SET ONLY



5 3/4" HEADLIGHT ASSEMBLY

66-84151D

5 3/4" HEADLIGHT ASSEMBLY.
 COMES WITH H4 12V 60/55 BULB

DOT COMPLIANT

BOTTOM MOUNT

REPLACEMENT COILS FOR HONDA



24-37802
 REPLACES HONDA OE:
 30400-045-035
 FITS: Z50A 1968-1971



24-37803
 REPLACES HONDA OE:
 30500-950-405
 FITS: XL100 1977, CT125 1977
 MT125 1976, TL125 K1, K2, SXL125,
 MR175 1976-1977, XL175 1977-1978,
 FL250 1977-1980, MT250A 1976, XL250 K1-K2,
 XL350 K1

NEW IGNITION COILS

EMGO # 24-72450	MODEL	YEAR
SUZUKI	GS650M	83
O.E.M # 33410-31311	GS650G/GL	81-83
SOLD EACH	GS700E/ES	85
	GV700	85
	GS750E/ES	83
	GS750S/T	82-83
	GSX-R750	86-87
	GS850G/GL	82-83
	XN85D	83
	GS1000E/ES/S	82
	GS1100E/ES/S	83
	GS1100G/GK/GL	82-83
	GS1100GKE	84
	GSX-R1100	86-88
	GS1150E/EF	84-86
	GV1200	85-86
EMGO # 24-72420	MODEL	YEAR
HONDA	CB350F	72-74
O.E.M # 30501-300-003	CB400F	75-77
SOLD EACH	CB500	71-73
	CB550F	75-77
	CB550K	75-78
	CB750A	76-78
	CB750F	75-78
	CB750K	69-78

24-72450



24-72420



REPLACEMENT COILS FOR VINTAGE HARLEY DAVIDSONS®

07-71551 12V



07-71562 6V



**AVAILABLE IN
BLACK AND
CHROME.
COMES WITH
SPARK PLUG
WIRES, AND
MOUNTING
BRACKETS**

EMGO #	MODEL	YEARS	OEM#	VOLTAGE	FINISH	CASE QTY.
07-71551	EL	1936 - 1940	31602-30	12V	BLACK	10
07-71552	FL	1941 - 1947	31602-30	6V	CHROME	10
07-71553	UL	1938 - 1947	31602-30	12V	CHROME	10
	VL	1930 - 1934				
07-71560	FL	1948 - 1960	37604-48	6V	BLACK	10
07-71561		1948 - 1960	37604-48	12V	BLACK	10
07-71562		1948 - 1960	37604-48	6V	CHROME	10
07-71563		1948 - 1960	37604-48	12V	CHROME	10

REPLACEMENT IGNITION SWITCH FOR VINTAGE HONDA



40-37700

EMGO #	MAKE	MODEL	YEARS	OEM #
40-37700	HONDA	CB125 K5	1970	35100-303-007
		CB175 K4 - K7	1970 - 1973	35100-303-003
		CB250 K0 - K3	1968 - 1971	35100-292-003
		CB350 K0 - K3	1968 - 1971	35100-292-013
		CB450 K3 - K7 Super Sport	1970 - 1974	
		CB750K0 - K2	1969 - 1972	
		CL125 K3	1970	
		CL175 K4 - K7	1970 - 1973	
		CL250 K0 - K3	1968 - 1971	
		CL350 K0 - K3	1968 - 1971	
		CL450 K3 - K6	1970 - 1974	
		SL350 K0	1969	

AVAILABLE FROM U.S.A. ONLY

NEW MX SWITCHES

46-50423



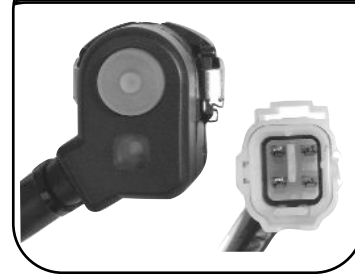
46-50424



46-50425



46-50452



EMGO #	MAKE	MODEL	YEARS	OEM#	DESCRIPTION
46-50423	HONDA	CRF450R	2017	35130-MKE-A02	KILL/ENGINE STOP
46-50424	HONDA	CRF450R	2013 - 2014	35130-MEN-A71	KILL/ENGINE STOP
46-50425	HONDA	CRF250R	2015 - 2017	35300-MEN-B11	MODE CHANGE
		CRF450R	2015 - 2016	35300-KRN-091	
46-50452	KAWASAKI	KX250F	2013 - 2018	27010-0812	LAUNCH MODE SWITCH
		KX450F	2012 - 2018	27010-0725	

REPLACEMENT FRONT LIGHTSWITCH FOR HONDA SCOOTER

FITS NS250 REFLEX 01-07,
 NSS250A REFLEX 01-07,
 NSS250AS REFLEX 04-07,
 NSS250S REFLEX 04-07,
 FSC600A SILVER WING 02-12,
 FSC600D SILVER WING 03-10

46-19422

REPLACES HONDA OE:
 35340-KFG-000



FUEL PUMP RELAY FOR HONDA ATV AND WATERCRAFT

EMGO #	MAKE	MODEL	YEARS
24-37840	HONDA	TRX420FA	09-14
REPLACES HONDA OE:	ATV	TRX420FE	09-13
38580-HP5-601		TRX420FM	09-13
		TRX420FPA	09-14
		TRX420FPE	09-13
		TRX420FPM	09-13
		TRX420TE	2009 - 2013
		TRX420TM	2009 - 2013
		TRX500FE	2012 - 2013

EMGO #	MAKE	MODEL	YEARS
24-37840	HONDA	TRX500FM	2012 - 2013
REPLACES HONDA OE:	ATV	TRX500FPE	2012 - 2013
38580-HP5-601		TRX500FPM	2012 - 2013
		TRX680FA	2008 - 2018
		TRX680FGA	2008 - 2009
		TRX700XX	2008 - 2009
	WATERCRAFT	ARX1500N3	2009
		ARX1500T3	2008 - 2009
		ARX1500T3D	2008 - 2009

BSA STEEL CLUTCH PLATE

EMGO #	OEM #	MAKE	MODEL
88-57450 (EA)	57-2725	BSA	B25
	40-3220	BSA	C15
		BSA	B40
		BSA	B44
		BSA	B50
	T2725	TRIUMPH	TR25SS
		TRIUMPH	TR25T
		TRIUMPH	TR25W



88-57450



SOLD EACH

STAINLESS STEEL VALVES FOR TRIUMPH®

18-55840
INTAKE
OE: 70-4603

18-55841
EXHAUST
OE 70-2904

**FITS TRIUMPH 650-750 MADE FROM
SUH3 STAINLESS STEEL**



REPLACEMENT FUEL VALVES

REPLACEMENT FUEL VALVES FOR HONDA



43-67190



43-67191



43-67192

CLASSIC HONDA FUEL VALVES

EMGO #	MAKE	MODEL	YEARS	OEM #
43-67190	HONDA	CB/CL100 - 125	1970 - 1973	16950-107-005
		SL100 - 125	1970 - 1973	
		XL100K0	1974	
43-67191	HONDA	CL175 SCRAMBLER	1970 - 1971	16950-292-000
		CB350G SUPER SPORT	1973	
		CB350K SUPER SPORT	1968 - 1973	
		CL350K SCRAMBLER	1968 - 1973	
		SL350K	1969 - 1973	
		CB360K	1974	
		CB360G	1974	
		CB360T	1975 - 1976	
		CL360K	1974 - 1975	
		CB450K	1965 - 1974	
CL450K	1968 - 1974			
43-67192	HONDA	CB500K0/K1/K2	1971 - 1973	16950-300-020
		CB550K	1974	
		CB750K0/K1/K2/K3/K4	1969 - 1974	

REPLACEMENT FUEL VALVES



43-67194



43-67195



43-67196



43-67197



43-67198

HONDA

EMGO PART

EMGO PART #	MODEL	YEARS	OEM NO.
43-67193	XL75	77-79	16950-149-025P
	XR75	77-78	
	XR80	1979	
	ATC185	1980	
	ATC185S	81-83	
	ATC200	82-83	
	ATC200E	82-83	
	ATC200ES	1984	
	ATC200M	84-85	
	ATC200S	84-86	
	TRX200	1984	
43-67194	MODEL	YEARS	OEM NO.
	NH50 LEAD	89-90	16950-GC8-003
	NH80 LEAD	89-94	
43-67195	MODEL	YEARS	OEM NO.
	CB125S	1976	16950-365-671
	CT125	1977	
	TL125S	1976	
	XL125	75-76	
43-67196	MODEL	YEARS	OEM NO.
	MT5	80-96	16950-167-025
	MT8		16950-167-015
	MTX80		16950-167-005
43-67197	MODEL	YEARS	OEM NO.
	XL125	77-78	
	CB125S	78-81	16950-150-000
	XR80	80-82	16950-150-005
	XL80S	80-81	16950-164-015
	XR100	81-82	16950-164-025
	TL125S	83/88	16950-164-035
	CM200T	1981	16950-KE6-830
	TLR200 REFLEX	86-87	16950-GF6-015
	XL100S	1981	16950-028-005
	43-67198	MODEL	YEARS
SL90			16950-028-000
CL90			16950-028-010
SS50			16950-070-700
CD50			
S90			
C320			

REPLACEMENT FUEL VALVES

HONDA

EMGO PART

43-67199	MODEL	YEARS	OEM NO.
	PF50		16950-148-004
43-67200	MODEL	YEARS	OEM NO.
	QA50, K1 - K3	73-75	16950-045-005
	Z50A K1 - K9		
	Z50 J1		
	Z50M		
	MR50, K1		
	PC50		
43-67201	MODEL	YEARS	OEM NO.
	NA50 EXPRESS	79-81	16950-163-035
	Z50R	79-85	16950-163-025
	Z50L MONKEY	79-97	16950-163-015
	Z50J GORILLA	88, 98-99	16950-GW8-670
			16950-166-015
			16950-166-025
43-67202	MODEL	YEARS	OEM NO.
	CB250N / T		16950-385-703
	CB400N / T		
	XL250S	78-81	
	XL350	77-78	
	CB400A	1978	
	CB400TI	1978	
	CB400TII	78-79	
	CB400T	80-81	
	CX500	78-79	
	CX500D/C	79-80	

SUZUKI

43-67400	MODEL	YEARS	OEM NO.
	A50		44300-22604-
	AP50		
	DS80	78-79	
	A100		
	GP100		
	TM100	74-75	
	TS100	78-79	
	GP125		
	DS125	79-81	
	GT125		
	RM125	76-78	
	TM125	73-75	
	DS185	78-80	
	GT185	73-76	
	TC185	74-77	
	TS185	73-79	
	TM250	72-75	
	TS250	77-79	
	TM400	71-75	
	TS400	72-77	



43-67199



43-67200



43-67201



43-67202



43-67400

REPLACEMENT FUEL VALVES

YAMAHA

43-67500	MODEL	YEARS	OEM NO.
	RD250	76-79	1A0-24500-00P
	RD250LC	80-82	
	RD350LC	80-82	
	RD400	76-79	
43-67501	MODEL	YEARS	OEM NO.
	RD75LC	1991	15A-24500-01P
	RD125LC	1986	
	XT125J, K	82-83	23F-24500-20-00
	TW200T,U,W	87-89	
	XT200J,K	82-83	
	TT250G,H,J	80-82	
	XT250G,H,J,K,L	80-84	
	XT350N,S,T,U	85-88	
	YFM600 GRIZZLY	1998	
43-67502	MODEL	YEARS	OEM NO.
	DT100A, B	74-75	498-24500-01P
	AT1	69-71	
	AT1M, MX	70-71	
	AT2	1972	
	AT3	1973	
	DT125A, B	74-75	
	CT1	69-71	
	CT2	1972	
	CT3	1973	
	DT175A,B	74-75	
	IT175D, E	77-78	
	DT1	69-71	
	DT1MX	70-71	
	DT2	1972	
	DT3	1973	
	DT250A,B, C	74-76	
	RT1,B	70-71	
	RT1M / RT1MX	70/71	
	RT2 / RT3	72/73	
	DT360A	1974	
	DT400C	1976	
	IT400C	1976	
	XT500C, D,E,F,G,H	76-81	

REPLACEMENT FUEL VALVES

YAMAHA

43-67503	MODEL	YEARS	OEM NO.
	HT1, B	70-71	304-24500-10P
	LT2	1972	357-24500-11-00
	YL2	67-68	
	RS100B, C	75-76	
	DT125E,F,G,H,(MX)	78-81	
	DT125MX	1986	
	DT175E,F,G H (MX)	78-81	
	MX175F,G,H,	79-81	
43-67504	MODEL	YEARS	OEM NO.
	YSR50T,U,W,A,B,D	87-92	10V-24500-02
	DT80LC	1992	
43-67505	MODEL	YEARS	OEM NO.
	JT2	1972	367-24500-04-00
	JT2MX	1972	
	RD60, A, B	73-75	
	G6S/B	70-71	
	G7S	1972	
	GT1	1971	
	GTMX	1973	
	GT80A,B,C, E,F,G	74-76, 78-80	
	GTMXA,C,D,E,F	74,76-78-79	
	GT80MXB	1975	
	L5T/A	69-70	
	LT1	1971	
	TY80A,B	74-75	
	YZ80A,B, C,D, E, F	74-79	
	YG1T TRAILMASTEI	1963	
	YG1TK	1965	
	YGS1/T	1966	
	YG5T/S	68-69	
	YJ2	1964	
	DT100D,E,F,G	77-80	
	MX100F,G	79-80	



43-67504



43-67505

PRODUCT UPDATE

PRODUCT UPDATE, NEW CABLES

PRODUCT UPDATE

WE ARE EXPANDING OUR CABLE LINE WITH MANY NEW CLUTCH, THROTTLE, SPEEDO, TACH CHOKE, FOR ATC, ATV, STREET AND DIRT MODELS. WE HAVE TOO MANY PART NUMBERS TO PRINT IN THIS PASSPORT, WE ARE ASSEMBLING THIS PASSPORT WHICH WILL INCLUDE ALL NEW CABLES AVAILABLE ONLINE ONLY IN THE PASSPORT SECTION, WHICH WILL BE AVAILABLE SOON @WWW.EMGO.COM (GO TO PASSPORTS)

NEW CABLES

EMGO #	HONDA	MODEL	YEARS	REPLACES OEM #	CABLE TYPE
26-40025	HONDA	CRF250R	2004 - 2007	22870-MEB-670	CLUTCH
		CRF250X	2004 - 2007		
		CRF450R	2002 - 2007		
26-40029	HONDA	CBR600RR	2003 - 2006	22870-MEE-010	CLUTCH
26-40049	HONDA	TRX400EX	1999 - 2004	22870-HN1-000	CLUTCH
26-40506	HONDA	ATC125M	1984 - 1987	17950-VM3-000	CHOKE
		TRX125 FOUR TRAX	1985 - 1986		
		ATC200E	1982		
		ATC200ES BIG RED	1984		
		ATC200M	1984 - 1985		
TRX200	1984				
26-40047	HONDA	CT70HK TRAIL 70H	1970	22870-KR3-000	CLUTCH
		CB100	1970 - 1972		
		CL100K SCRAMBLER	1970 - 1972		
		CB125	1973 - 1975		
		CL125S SCRAMBLER	1973 - 1974		
		CB250 NIGHTHAWK	1991 - 2000		
CMX250C REBEL	1985 - 1987				
26-40065	HONDA	CR250R	1984 - 1996	22870-KA4-830	CLUTCH
		CR500R	1985 - 2001		
26-40066	HONDA	CR250M ELSINORE	1975 - 1976	22870-358-000	CLUTCH
		MR250 ELSINORE	1976		
		MT250 K ELSINORE	1974 - 1976		
26-40023	HONDA	XL100	1977 - 1978	22870-382-670	CLUTCH
		CT125 TRAIL	1977		
		XL125	1976 - 1978		
26-40067	HONDA	XR75K	1977 - 1978	22870-176-770	CLUTCH
		XL80S	1983 - 1984		
		XR80	1979 - 1985		
		XR80R	1986 - 2006		
		XR100R	1985 - 2006		
		CRF100F	2004 - 2006		
26-40068	HONDA	CB125	1979 - 1982	22870-383-830	CLUTCH
		XL125S	1979 - 1984		
		XL185S	1979 - 1983		
		ATC200X	1983 - 1985		
		XL200R	1983 - 1984		
		XR200	1980-1984		
		XR200R	1986 - 2002		
26-40069	HONDA	CB400TI HAWK I	1978 - 1979	22870-447-010	CLUTCH
		CB400TII HAWK II	1978 - 1979		
		CM400E	1980 - 1981		
		CM400T	1980 - 1981		
		CM450C CUSTOM	1982		
26-40070	HONDA	CB750C CUSTOM	1980 - 1982	22870-461-000	CLUTCH
		CB750F SUPER SPORT	1979 - 1982		
		CB750K	1979 - 1982		
		CB750L	1979		
		CB750SC NIGHTHAWK	1982 - 1983		
		CB900C CUSTOM	1980 - 1982		
		CB900F SUPER SPORT	1981 - 1982		
		CB1000C CUSTOM	1983		

NEW CABLES

EMGO #	HONDA	MODEL	YEARS	REPLACES OEM #	CABLE TYPE
26-40419	HONDA	ATC110 ARC125M TRX125 FOUR TRAX	1984 - 1985 1984 - 1985 1985 - 1986	43460-968-000	BRAKE
26-40439	HONDA	XL75 XR75K CR80R XL80S XR80 CRF100F XL100S XR100R CT110 TRAIL	1977 - 1979 1977 - 1978 1980 - 1985 1980 - 1984 1979 - 1982 2004 - 2009 1981 1985 - 2006 1980 - 1984	45450-GC4-000	BRAKE
26-40504	HONDA	CB550K CB750A AUTOMATIC CB750C CUSTOM CB750F SUPER SPORT CB750K CB750L CB900C CUSTOM CB900F SUPER SPORT	1977 - 1978 1976 - 1978 1980 - 1982 1977 - 1982 1977 - 1982 1979 1980 - 1982 1981 - 1982	17950-425-000	CHOKE
26-40182	HONDA	ATC250R	1983 -1984	17910-964-000	THROTTLE
26-40150	HONDA	CB650 CB650C CUSTOM CB650SC NIGHTHAWK CB750C CUSTOM CB750F SUPER SPORT CB750K CB750SC NIGHTHAWK CB900C CUSTOM CB900F SUPER SPORT CB100C CUSTOM	1981 - 1982 1981 1982 1980 - 1982 1979 - 1982 1979 - 1982 1982 - 1983 1980 - 1982 1981 - 1982 1983	17910-425-030	THROTTLE, PULL
26-40151	HONDA	CB650 CB650C CUSTOM CB650SC NIGHTHAWK CB750C CUSTOM CB750F SUPER SPORT CB750K CB750SC NIGHTHAWK CB900C CUSTOM CB900F SUPER SPORT CB100C CUSTOM	1981 - 1982 1981 1982 1980 - 1982 1979 - 1982 1979 - 1982 1982 - 1983 1980 - 1982 1981 - 1982 1983	17920-425-030	THROTTLE, PUSH
26-40195	HONDA	CB400A AUTOMATIC CB400T HAWK CB400TI HAWK I CB400TII HAWK II CM400A HONDAMATIC CM400C CUSTOM CM400E CB450SC NIGHTHAWK CB450SC NIGHTHAWK CB450T HAWK CM450A HONDAMATIC CM40C CUSTOM CM450E CX500C CUSTOM CX500D DELUXE	1978 1980 - 1981 1978 - 1979 1978 - 1979 1979 - 1981 1981 1980 - 1981 1983/85 1985 1982 1982 - 1983 1982 1982 - 1983 1979 - 1981 1979 - 1981	17910-449-010	THROTTLE, PULL

NEW CABLES

EMGO #	HONDA	MODEL	YEARS	REPLACES OEM #	CABLE TYPE
26-40196	HONDA	CB400A AUTOMATIC CB400T HAWK CB400TI HAWK I CB400TII HAWK II CM400A HONDAMATIC CM400C CUSTOM CM400E CB450SC NIGHTHAWK CB450SC NIGHTHAWK CB450T HAWK CM450A HONDAMATIC CM40C CUSTOM CM450E CX500C CUSTOM CX500D DELUXE	1978 1980 - 1981 1978 - 1979 1978 - 1979 1979 - 1981 1981 1980 - 1981 1983 1985 1982 1982 - 1983 1982 1982 - 1983 1979 - 1981 1979 - 1981	17920-449-010	THROTTLE, PUSH
26-40197	HONDA	CR80R XR80	1982 - 1995 1984 - 1985	17910-GC4-730	THROTTLE
26-40172	HONDA	ATC185 ATC185S ATC200 ATC200E ATC200ES BIG RED ATC200M ATC200S TRX200	1980 1981 - 1983 1981 - 1983 1982 1984 1984 1984 1984	17910-958-023	THROTTLE
26-41100	HONDA	XR200R XL250R XR250R XL350R XR350R XR500R XL600R XR600R	1984 - 1985 1984 - 1985 1984 - 1995 1984 - 1985 1983 - 1984 1981 - 1982 1983 - 1985 1986 - 1987	17910-MA0-010	THROTTLE, PULL
26-41101	HONDA	XR200R XL250R XR250R XL350R XR350R XR500R XL600R XR600R	1984 - 1985 1984 - 1985 1984 - 1995 1984 - 1985 1983 - 1984 1981 - 1982 1983 - 1985 1986 - 1987	17920-KF0-000	THROTTLE, PUSH
26-40198	HONDA	CR250R CR500R	1986 - 1989 1985 - 1989	17910-KA5-840	THROTTLE
26-40199	HONDA	CR80R TL125K TRIALS	1980 - 1981 1973 - 1976	17910-355-000	THROTTLE
26-41102	HONDA	XL250K MOTOSPORT XL350K	1972 - 1975 1974 - 1975	17920-356-000	THROTTLE
26-41103	HONDA	XL250K MOTOSPORT XL350K	1972 - 1975 1974 - 1975	17910-356-000	THROTTLE
26-41104	HONDA	CB360G CB360T CJ360T CL360K SCRAMBLER	1974 1975 - 1976 1976 - 1977 1974 - 1975	17910-369-000	THROTTLE, PULL

NEW CABLES

EMGO #	HONDA	MODEL	YEARS	REPLACES OEM #	CABLE TYPE
26-41105	HONDA	CB360G CB360T CJ360T CL360K SCRAMBLER	1974 1975 - 1976 1976 - 1977 1974 - 1975	17920-369-000	THROTTLE, PUSH
26-40200	HONDA	CX500T TURBO FT500 ASCOT VF500C V30 MAGNA VT500C SHADOW CB650SC NIGHTHAWK CX650T TURBO VF700C MAGNA VF700S SABRE VT700C SHADOW CB750SC NIGHTHAWK VF750C V45 MAGNA VT750C SHADOW CB100C CUSTOM VF1000F INTERCEPTOR VF1000R VT1100C SHADOW VT1100C SHADOW VT1100C2 A.C.E. GL1200I GOLD WING INTERSTATE GL1500 GOLD WING GL1500 GOLD WING ASPENCADE GL1500C VALKYRIE GL1500T VALKYRIE TOURER GL1500SE GOLD WING SE	1982 1982 - 1983 1984 - 1985 1983 - 1986 1983 - 1985 1983 1985 - 1986 1984 - 1985 1984 - 1985 1982 - 1983 1982 - 1983 1983 1983 1984 1985 1987 - 1990 1992 - 1996 1995 - 1996 1984 - 1986 1988 - 1990 1991 - 2000 1997 - 2000 1997 - 2000 1990 - 2000	44830-ME1-0670	SPEEDO
26-40256	HONDA	CB450SC NIGHTHAWK CB450 SC NIGHTHAWK CM450A HONDAMATIC VT600C SHADOW VLX VT600C SHADOW VLX VT600C SHADOW VLX VT600CD SHADOW VLX DELUXE VT600CD SHADOW VLX DELUXE GL650 SILVER WING GL650I SILVER WING INTERSTATE CB700SC NIGHTHAWK S VF700F INTERCEPTOR CB750 NIGHTHAWK CB750 NIGHTHAWK VF750F V45 INTERCEPTOR PC800 PACIFIC COAST GL1100 GOLD WING GL1100A GOLD WING ASPENCADE VT1100C SHADOW GL1200 GOLD WING GL1200A GOLD WING ASPENCADE	1983 1985 1983 1988 - 1989 1991 - 1997 1999 - 2003 1993 - 1997 1999 - 2000 1983 1983 1984 - 1985 1984 - 1985 1991 - 1993 1995 - 2000 1983 - 1984 1997 - 1998 1983 1983 1985 - 1986 1984 1984	44830-MB2-000	SPEEDO
EMGO #	KAWASAKI	MODEL	YEARS	REPLACES OEM #	CABLE TYPE
26-40047	KAWASAKI	KLT250 KLT250C PRAIRIE	1982 - 1984 1983 - 1985		CLUTCH

NEW CABLES

EMGO #	KAWASAKI	MODEL	YEARS	REPLACES OEM #	CABLE TYPE
26-58041	KAWASAKI	EX250E NINJA 250R EX250F NINJA 250R EX250F NINJA 250R	1986 - 1987 1988 - 1990 1992 - 2000	54011-1295	CLUTCH
26-58042	KAWASAKI	KX250	1999 - 2004	54011-1389	CLUTCH
26-40047	KAWASAKI	KLT250 KLT250C PRAIRIE	1982 - 1984 1983 - 1985		CLUTCH
26-58043	KAWASAKI	KX125	1988 - 1993	54011-1262	CLUTCH
26-58044	KAWASAKI	KD125 KE125 KS125 KX125	1975 - 1979 1976 - 1983 1974 - 1975 1974	54011-071	CLUTCH
26-58013	KAWASAKI	KD80/A KD80M MC1 90 MC1M 90 G5 100 G5 100 KD100M KE100 KH100 KM100	1975 - 1976 1980 - 1985 1975 1975 1972 1974 1976 - 1979 1976 - 1995 1976 - 1977 1976 - 1981	54011-071	CLUTCH
26-58200	KAWASAKI	EL250B ELIMINATOR EX500D NINJA 500R XL600A ELIMINATOR ZX-7 NINJA ZX-9R NINJA ZL1000A ELIMINATOR ZX1000A NINJA 1000R	1988 - 1989 1997 - 2003 1986 1989 - 2003 1994 - 1997 1987 1986 - 1987	54001-1117	SPEEDO
26-58300	KAWASAKI	KZ440G EN450A 6454 LTD KZ650B KZ650C CUSTOM KZ650D SR KZ650E LTD KZ650F KZ650H CSR KZ750H LTD Z1 900 KZ900A KZ900B LTD KZ1000A KZ1000 MKII KZ1000B LTD KZ1000C POLICE KZ1000G CLASSIC KZ1000M CSR	1982 1985 - 1990 1977 - 1979 1977 - 1979 1978 - 1979 1980 19890 1981 - 1983 1980 - 1983 1973 - 1975 1976 1976 1977 - 1978 1980 1977 - 1980 1978 - 1981 1980 1981 - 1982	54018-015	TACHOMETER
26-58037	KAWASAKI	ZX-6R NINJA ZX-6RR NINJA	2006 2006	54011-0050	CLUTCH
26-58038	KAWASAKI	ZX-9R NINJA	2002 - 2003	54011-1416	CLUTCH
26-58039	KAWASAKI	ZX-6RR NINJA	2003 - 2004	54011-1423	CLUTCH
26-58040	KAWASAKI	KX125	1997 - 1998	54011-1366	CLUTCH
26-58117	KAWASAKI SUZUKI	KXF400 LT-Z400 QUAD SPORT Z	2003 - 2006 2003 - 2008	54012-S018	THROTTLE



NEW ITEMS



NEW CABLES

EMGO #	KTM	MODEL	YEARS	REPLACES OEM #	CABLE TYPE
26-20000	KTM	250 EXC	1994 - 1998	10-0037	CLUTCH
		250 SX	1994		
		250 SX	1996 - 1998		
		300 EXC	1994 - 1998		
		300 MXC	1994 - 1998		
		360 MXC	1996 - 1997		
		380 EXC	1998		
		380 MXC	1998		
		380 SX	1998		
EMGO #	SUZUKI	MODEL	YEARS	REPLACES OEM #	CABLE TYPE
26-63100	SUZUKI	GSX-R600 GSX-R750	2004 - 2005 2004 - 2005	58200-29G00	CLUTCH
26-63131	SUZUKI	GSX-R600	2001	58200-39F00	CLUTCH
		GSX-R750	2000 - 2003		
		GSX-R1000	2001 - 2003		
26-63141	SUZUKI	GT250	1973 - 1977	58200-31000	CLUTCH
		T250 HUSTLER	1969 - 1972		
		TS250 SAVAGE	1969 - 1975		
		T305	1968		
		T350 REBEL	1969 - 1972		
		GT380 SEBRING	1972 - 1977		
		GT500	1976 - 1977		
		T500 TITAN	1968 - 1975		
		GT550 INDY	1972 - 1977		
GT750 LEMANS	1972 - 1977				
26-63142	SUZUKI	TC185	1974 - 1977	58200-29000	CLUTCH
		TS185 SIERRA	1971 - 1975		
26-63133	SUZUKI	GS750E	1980 - 1981	58200-45400	CLUTCH
		GS750T	1982 - 1983		
		GS1000	1978 - 1979		
		GS1000E	1978 - 1980		
		GS1100E	1980 - 1983		
		GS1100ES	1983		
GS1150E	1985 - 1986				
26-63121	SUZUKI	DR250	1990 - 1993	58200-14D00	CLUTCH
		DR250S	1990 - 1993		
		DR350	1990 - 1998		
		DR350S	1990 - 1993		
26-63137	SUZUKI	GSX600F KATANA	1988 - 2003	58200-20C00	CLUTCH
		GXS750F KATANA	1989 - 2002		
26-63146	SUZUKI	RM250	1997 - 2000		CLUTCH
26-63301	SUZUKI	GT250	1973 - 1977	34910-38A03	SPEEDO
		GT380 SEBRING	1974 - 1977		
		GT500	1977		
		GT550 INDY	1972 - 1977		
		GT750 LEMANS	1973 - 1977		
		RE5 ROTARY	1975 - 1976		
		VS700G INTRUDER	1986 - 1987		
		VS700GLEF INTRUDER	1986 - 1987		
		VS700GLEP INTRUDER	1986 - 1987		
		VS700GLF INTRUDER	1986 - 1987		
		VS700GLP INTRUDER	1986 - 1987		
		VS750GLPINTRUDER	1988 - 1991		
		VS800G INTRUDER	1992 - 2003		
		VS800GL INTRUDER	1992 - 2004		

NEW CABLES

EMGO #	SUZUKI	MODEL	YEARS	REPLACES OEM #	CABLE TYPE
26-63255	SUZUKI	RV125 TRACKER TC125 PROSPECTOR TS125 DUSTER TC185 RANGER TS185 SIERRA	1973 - 1977 1971 - 1977 1971 - 1977 1974 - 1977 1971 - 1975	58300-28002	THROTTLE
26-62905	SUZUKI	LT230E LT-F250 QUAD RUNNER LT-F4WD QUAD RUNNER 250 LT-F4WDX KING QUAD 280 LT-F300F KING QUAD 4X4 LT300E QUAD RUNNER	1987 - 1993 1988 - 2002 1987 - 1998 1987 - 1998 1999 - 2000 1999 - 2002	58410-41B00	CHOKE
EMGO #	YAMAHA	MODEL	YEARS	REPLACES OEM #	CABLE TYPE
26-77301	YAMAHA	PW50 PW50 PW50	1981 - 1983 1985 - 1988 1990 - 1998	4X4-26311-01-00	THROTTLE, PULL
26-77341	YAMAHA	XV700 VIRAGO TX750 XJ750 MAXIM XJ750M MIDNIGHT MAXIM XV1000 VIRAGO XV1100 VIRAGO	1986 - 1987 1973 - 1974 1982 - 1983 1983 1984 - 1985 1986 - 1987	15R-26311-00-00	THROTTLE, PULL
26-77338	YAMAHA	YZ80	1983 - 2001	22W-26311-00-00	THROTTLE
26-77201	YAMAHA	YZ250F	2006 - 2008	5XC-26335-90-00	CLUTCH
26-77242	YAMAHA	YZ250F YZ450F	2003 - 2005 2004 - 2005	5UL-26335-00-00	CLUTCH
26-77243	YAMAHA	YSF200 BLASTER	1988 - 2005	2XJ-26335-00-00	CLUTCH
26-77245	YAMAHA	XV700 VIRAGO XV750 VIRAGO XV750 VIRAGO XV750M MIDNIGHT VIRAGO XV920 VIRAGO XV920M MIDNIGHT VIRAGO XV920R XV1000 VIRAGO XV1100 VIRAGO	1984 - 1985 1981 - 1983 1988 - 1998 1983 1982 - 1983 1983 1981 - 1982 1984 - 1985 1986 - 1998	10L-26335-00-00	CLUTCH
26-77246	YAMAHA	XT550 TT600 XT600 XJ650L TURBO SECA XJ650R SECA	1982 - 1983 1983 - 1984 1984 - 1989 1982 - 1983 1982	55U-26335-01-00	CLUTCH
26-77247	YAMAHA	AT-1 ENDURO 125 AT-1M AT-2M AT-3 ATMX CT1 ENDURO 175 CT2 175 CT3 175	1970 - 1971 1971 1972 1973 1973 1969 - 1971 1972 1973	248-26335-00-00	CLUTCH
26-77264	YAMAHA	RD250 RD350	1973 - 1974 1973 - 1975	360-26335-00-00	CLUTCH
26-77221	YAMAHA	XS1100 XS1100 MAXIM XS1100 MIDNIGHT SPECIAL XS1100S SPECIAL	1978 - 1981 1982 1980 - 1981 1979 - 1981	10M-26335-00-00	CLUTCH

NEW CABLES

EMGO #	YAMAHA	MODEL	YEARS	REPLACES OEM #	CABLE TYPE
26-77265	YAMAHA	XS750 SPECIAL XS850 XS850M MIDNIGHT SPECIAL XS850S SPECIAL	1978 - 1979 1980 - 1981 1980 - 1981 1980 - 1981	4H1-26335-00-00	CLUTCH
26-77229	YAMAHA	XJ650 MAXIM XJ650L MIDNIGHT MAXIM XJ750 MAXIM	1981 - 1983 1981 1982 - 1983	4H7-26335-00-00	CLUTCH
26-77244	YAMAHA	YFZ350 BANSHEE	1987 - 2006	2GV-26335-00-00	CLUTCH
26-77400	YAMAHA	RD200 RD250 R5 350 RD350 RD400 XS400 XS400S SPECIAL SR500 XS500 ZX550R VISION YX600 RADIANT XS650-2	1976 1975 1970 - 1972 1973 - 1975 1976 - 1979 1977 - 1979 1980 - 1981 1978 - 1981 1975 - 1978 1982 - 1983 1986 - 1990 1979	341-83550-01-00	SPEEDO
26-77124	YAMAHA	YZ125 IT250 IT250 TT250 YZ250 IT400 YZ400 IT490	1980 1977 - 1979 1983 1980 - 1982 1982 1977 - 1979 1977 - 1979 1983 - 1984	5X5-26341-00-00	BRAKE
26-77100	YAMAHA	YFS200 BLASTER YFB250 TIMBERWOLF 2WD YBF250U TIMBERWOLF 2WD	1988 - 2005 1992 - 1998 1996 - 1998	2XJ-26361-00-00	LOWER FRONT BRAKE
26-77123	YAMAHA	YFS200 BLASTER YFB250 TIMBERWOLF 2WD YBF250U TIMBERWOLF 2WD	1988 - 2005 1992 - 1998 1996 - 1998	4BD-26373-01-00	UPPER FRONT BRAKE



CLASSIC SHOCK SETS
4 SETS FIT OVER 100 MODELS
 OF HONDA, KAWASAKI, SUZUKI & YAMAHA



HONDA

SUZUKI

KAWASAKI

YAMAHA

NOT JUST FILTERS & MIRRORS....

PEOPLE KNOW US FOR OUR FILTERS & MIRRORS BECAUSE WE ARE ONE OF THE WORLDS LEADING SUPPLIERS OF MOTORCYCLE FILTERS & MIRRORS.

WE ARE ALSO A MAJOR SUPPLIER OF BRAKE PADS, CONTROL LEVERS, FOOTPEGS, GOGGLES AND MANY OTHER AFTERMARKET POWERSPORT PRODUCTS.

IN FACT, WE HAVE OVER 4,000 CATALOGUED PARTS THAT WE SUPPLY TO OVER 100 DISTRIBUTORS THROUGHOUT THE WORLD.

IF YOU ARE NOW OFFERING YOUR CUSTOMERS QUALITY EMGO PRODUCTS, THEN YOU KNOW OUR PRODUCTS ARE PROFIT MAKERS.

IF YOU ARE STILL NOT OFFERING YOUR CUSTOMERS EMGO PRODUCTS, THEN YOU ARE MISSING OUT.

RETAIL DEALERS: CONTACT YOUR EMGO DISTRIBUTOR TODAY!



MOTORCYCLE PRODUCTS

THE AMERICAN MOTORCYCLE PROFESSIONALS IN

ASIA SINCE 1967

DISTRIBUTED BY:



UNITED STATES:

ATTN: EMIL GOMEZ

BOX 664

MABLETON, GA. 30126

TEL: 770-944-3532

FAX: 770-944-7672

E-MAIL: emil@emgo.com

TAIWAN:

ATTN: SHARON CHUNG

2ND FLOOR, #142 MIN CHUAN E. RD.

SEC 2, TAIPEI, TAIWAN R.O.C.

TEL: 886-2-2517-2722

FAX: 886-2-2501-1124

E-MAIL: sharon@emgo.com.tw