

**IEMIGO®****POWERSPORTS**

A GUIDE TO PRODUCTS AND INFORMATION

**PASSPORT****2018 SUMMER**

JUNE - JULY - AUGUST

**THE 2018 MOTORCYCLE SEASON IS NOW UPON US. ORDERS FROM OUR CUSTOMERS ARE COMING IN AT A REGULAR SCHEDULE.**

**“POWERSPORTS BUSINESS” REPORTS DURING APRIL 2018 AN OVERALL DOWNTURN IN THE DOMESTIC MARKET. FOR MORE DETAILS CHECK OUT THEIR WEBSITE:**

**[www.powersportsbusiness.com](http://www.powersportsbusiness.com)**

**EMGO SALES AND SHIPMENTS HAVE BEEN STEADY WITH INCREASES AROUND THE WORLD.**

**DURING THE NEXT FEW MONTHS WE WILL BE REVIEWING OUR PRODUCTS WITH THE GOAL OF EXPANDING CURRENT INVENTORY.**

**FOR 2019 EMGO WILL PRODUCE ONE GENERAL CATALOG, OUR GOAL IS TO HAVE IT AVAILABLE BY DECEMBER 2018**

**NEW PRODUCTS, NOW AVAILABLE IN THIS “PASSPORT”, MEAN MORE SALES, MORE PROFITS, PLACE YOUR ORDERS TODAY TO GUARANTEE DELIVERY.**

**EMIL GOMEZ**

**IEMIGO®**

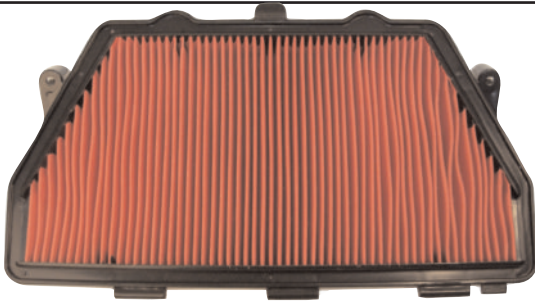
Phone: (770) 944-3532



Fax: (770) 944-7672

**IEMIGO®**Mail to: EMGO Int'l Ltd.  
PO Box 664  
Mableton, GA  
30126 U.S.A.Internet: [www.emgo.com](http://www.emgo.com)  
Email: [emgo@emgo.com](mailto:emgo@emgo.com)

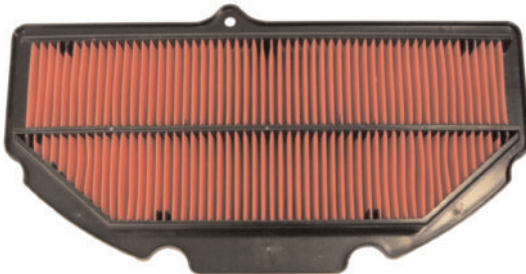
## NEW ITEMS

**12-91142 AIR FILTER FOR HONDA****APPLICATIONS****REPLACES OEM: 17210-MFL-000**

**CBR1000RR**      2008 - 2016,  
**CBR1000RA**      2010 - 2016,  
**CBR1000SP**      2014 - 2016

**12-93028 AIR FILTER FOR KAWASAKI****APPLICATIONS****REPLACES OEM:11013-0001**

**KVF650 PRAIRIE, BRUTE FORCE** 2003 - 2008  
**KFX700A V FORCE (KSV700)**      2004 - 2009  
**KFV700 PRAIRIE 4X4, TEAM GREEN** 2004-2006

**12-94096 AIR FILTER FOR SUZUKI****APPLICATIONS****REPLACES OEM:13780-47H00 / 10**

**GSX-R1000**      2009 - 2016  
**GSX-S1000**      2015 - 2017

**12-94217 AIR FILTER FOR TRIUMPH****APPLICATIONS****REPLACES OEM:T2200557**

**800 TIGER**      2011 - 2016  
**800 TIGER XC / XCA / XCX** 2011 - 2017  
**800 TIGER XR / XRT / XR** 2015 - 2017

**12-94156 AIR FILTER FOR MV AGUSTA****APPLICATIONS****REPLACES OEM: 8000A9050**

**BRUTALE B4 910S**      2005 - 2007  
**BRUTALE B4 920**      2011 - 2012  
**BRUTALE 989R**      2008 - 2009  
**BRUTALE 990R**      2010 - 2011  
**BRUTALE 1078R**      2010 - 2013  
**BRUTALE 1090RR**      2009

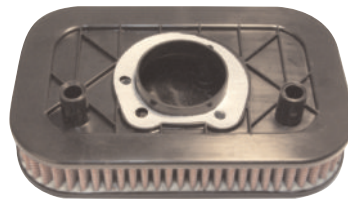
**NEW ITEMS**



**12-81570**



**12-81580**



**12-81581**



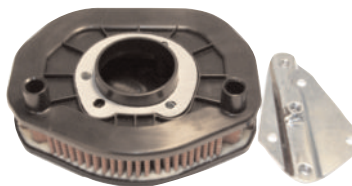
**12-81583**



**12-81584**



**12-81585**



**12-81586**



**12-81587**

EMGO#	MODEL	YEARS	OEM #
12-81570	XL883R XLH 1200 XLH 883 XL1200C XL 883C XLH 883 XL1200S	2002-2003 1988-2003 1988-2003 1996-2003 1999-2003 1988-2003 1996-2003	29036-88, 29330-96
12-81580	<b>CARBURETED TWIN CAM MODELS</b> <b>SOFTAIL EFI MODELS EXCEPT:</b> 2012 - LATER FLS 2008-2011 FLSTSB 2011 AND LATER FXS <b>2002-2007 EFI DYNA &amp; TOURING MODELS</b>	1999-2006 2001-2015	29461-99
12-81581	<b>XL MODELS WITH OVAL AIR CLEANER ASSY</b>	2004-2013	29331-04
12-81583	<b>TOURING AND TRIKE MODELS</b>	2008-2013	29633-08
12-81584	<b>DYNA MODELS WITH TEARDROP AIR CLEANER</b>	2008-2015	29191-08
12-81585	FXDB FLS FLSTSB FXS	2013 - LATER 2012-2015 2008-2011 2011-2013	29314-08
12-81586	<b>XL MODELS WITH ROUND AIR FILTER COVER</b>	2014 - LATER	29400015
12-81587	<b>TOURING MODELS AND TRIKES</b> <b>SOFTAIL MODELS EXCEPT FLSTFBS</b>	2014-2016 2016-2017	29400045

**NEW ITEMS**



**5 3/4 HEADLIGHT ASSEMBLY**

**66-84151D**

**5 3/4" HEADLIGHT ASSEMBLY.  
COMES WITH H4 12V 60/55 BULB**

**DOT COMPLIANT**

**BOTTOM MOUNT**

**REPLACEMENT COILS FOR VINTAGE HARLEY DAVIDSONS®**

**07-71551 12V**



**AVAILABLE IN  
BLACK AND  
CHROME.  
COMES WITH  
SPARK PLUG  
WIRES, AND  
MOUNTING  
BRACKETS**

**07-71562 6V**



EMGO #	MODEL	YEARS	OEM#	VOLTAGE	FINISH	CASE QTY.
07-71551	EL	1936 - 1940	31602-30	12V	BLACK	10
07-71552	FL	1941 - 1947	31602-30	6V	CHROME	10
07-71553	UL	1938 - 1947	31602-30	12V	CHROME	10
	VL	1930 - 1934				
07-71560	FL	1948 - 1960	37604-48	6V	BLACK	10
07-71561		1948 - 1960	37604-48	12V	BLACK	10
07-71562		1948 - 1960	37604-48	6V	CHROME	10
07-71563		1948 - 1960	37604-48	12V	CHROME	10



**REPLACEMENT FRONT BRAKE PADS FOR HONDA**

**91-68018 SINTERED, 64-68068 FULL METAL  
REPLACES OEM: 06455-MGE-006**

**FITS:**

**HONDA VFR 1200F (MANUAL GEARBOX) 2010-2016  
VFR1200FD (AUTOMATIC TRANSMISSION) 2010-2017**



## NEW ITEMS

## REPLICA MAGURA FLEX LEVERS FOR KTM, HUSQVARNA

30-69534F



30-69533F



EMGO #	MAKE	MODEL	YEARS	REPLACES OE:
30-69533F	HUSQVARNA	TC125	2018	24013002000
<b>BRAKE LEVER</b>		TX125	2018	
		TE150	2018	
		FC250	2018	
		FE250	2018	
		TC250	2018	
		TE250/I	2018	
		TE300/I	2018	
		TX300	2018	
		FC350	2018	
		FE350	2018	
		TX350	2018	
		FE450	2018	
		FE501	2018	
EMGO #	MAKE	MODEL	YEARS	REPLACES OE:
30-69534F	KTM	125 EXC	2008 - 2016	50302031300
<b>CLUTCH LEVER</b>		125 SX	2014 - 2015	
		150 SX	2009 - 2015	
		150 XC	2014	
		200 EXC	2009 - 2016	
		200 XC-W	2009 - 2016	
		300 XC-W	2014	
		450 SX-F	2009 - 2012	
		505 XC-F	2009	
	HUSQVARNA	TC125	2014 - 2017	
		TX125	2017	
		TE150	2017	
		FC250	2016 - 2017	
		FE250	2017	
		TC250	2017	
		TE250	2017	
		TE300	2017	
		TX300	2017	
		FC350	2016 - 2017	
		FE350	2017	
		FX350	2017	
		FC450	2016 - 2017	
		FE450	2017	
		FX450	2017	
		FE501	2017	



# NEW ITEMS



## NEW FORGED ALUMINUM SHIFTERS

83-87900 AND 83-87910 WILL HAVE AN ALUMINUM FINISH AS PER 83-87920 AND 83-87965



83-87900



83-87910



83-87920



83-87965

EMGO #	MAKE	MODEL	YEARS	OEM #
83-87900	HONDA	CRF125F	2014 - 2018	24701-K28-305
83-87910	HONDA	CRF1000	2016 - 2017	24705-MJP-305
83-87920	KAWASAKI	KLX140	2008 - 2018	13242-0134
83-87965	YAMAHA	TTR125LE	2005 - 2018	1B2-E8110-00-00



## MORE OF THE THINGS YOUR CUSTOMERS WANT...



P.O. BOX 664  
MABLETON, GA 30126  
TEL: (770) 944-3532 FAX: (770) 944-7672



2F, #142 MIN CHUAN E. RD., SEC. 2  
TAIPEI, TAIWAN R.O.C.  
TEL: (886) 02-2517-2722 FAX: (886) 02-2501-1124

